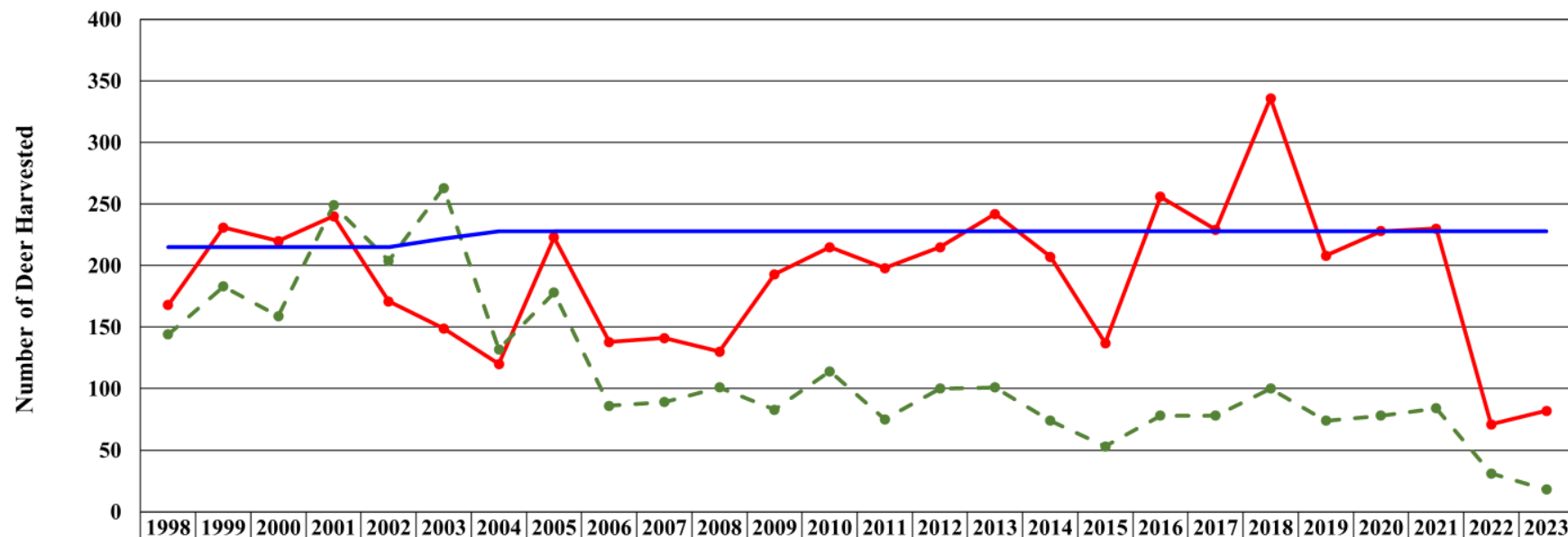


# DEER MANAGEMENT ZONES OF CONCERN

- Watching a few Deer Management Zones (DMZ)
  - After COVID Bump (2020/2021) and the EHD outbreaks (2021/2022 and 2022/2023)
  - Deer populations rebound after 2-3 years with good habitat and resources
  - Two southern DMZs have not rebounded (DMZs 45 and 46)

# Deer Management Zone 45

Deer Range = 65 sq. mi.



	1998	1999	2000	2001	2002	2003	2004	2005	2006	2007	2008	2009	2010	2011	2012	2013	2014	2015	2016	2017	2018	2019	2020	2021	2022	2023
Antlered	168	231	220	240	171	149	120	223	138	141	130	193	215	198	215	242	207	137	256	229	336	208	228	230	71	82
Antlerless	144	183	159	249	204	263	132	178	86	89	101	83	114	75	100	101	74	53	78	78	100	74	78	84	31	18
Buck Goal	215	215	215	215	215	222	228	228	228	228	228	228	228	228	228	228	228	228	228	228	228	228	228	228	228	228

Reg Set 0

Buck goal = 3.5 bucks per square mile

Strategy = Increase

- 93 individuals harvested 100 deer
- Of the 18 Antlerless - 14 were Does
- Of the 82 Bucks - 49 were taken during Six-Day

2009: Reg Set changed to Set 0

# DEER MANAGEMENT ZONE 45

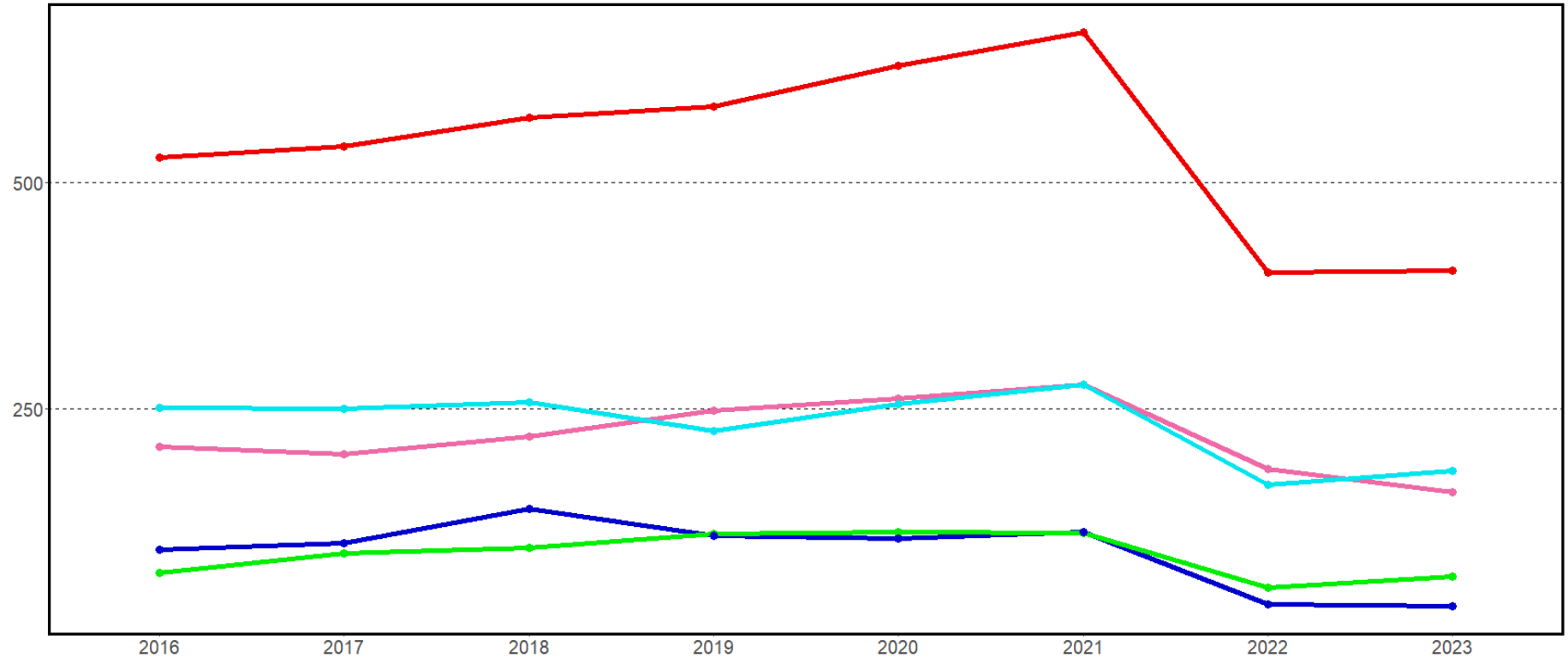
<b>Antlerless</b>	<b>2016</b>	<b>2017</b>	<b>2018</b>	<b>2019</b>	<b>2020</b>	<b>2021</b>	<b>2022</b>	<b>2023</b>
<b>Fall Bow</b>	<b>11</b> (2 BB, 8 Does, 1 M)	<b>13</b> (2 BB, 11 Does)	<b>14</b> (2 BB, 11 Does, 1 M)	<b>13</b> (4 BB, 9 Does)	<b>20</b> (4 BB, 13 Does, 3 M)	<b>7</b> (1 BB, 5 Does, 1 M)	<b>6</b> ( 6 Does)	<b>2</b> (2 Does)
<b>Permit Bow</b>	<b>15</b> (2 BB, 7 Does, 3 M)	<b>8</b> (2 BB, 5 Does, 1 M)	<b>11</b> (2 BB, 9 Does)	<b>11</b> (1 BB, 9 Does, 1 M)	<b>9</b> (3 BB, 6 Does)	<b>14</b> (2 BB, 11 Does, 1 M)	<b>6</b> (1 BB, 4 Does, 1 M)	<b>0</b>
<b>Permit Muzzleloader</b>	<b>23</b> (2 BB, 20 Does, 1 M)	<b>24</b> (4 BB, 18 Does, 2 M)	<b>26</b> (3 BB, 20 Does, 3 M)	<b>16</b> (3 BB, 13 Does)	<b>21</b> (1 BB, 18 Does, 2 M)	<b>19</b> (2 BB, 13 Does, 4 M)	<b>8</b> (1 BB, 6 Does, 1 M)	<b>4</b> (3 Does, 1 M)
<b>Permit Shotgun</b>	<b>13</b> (3 BB, 10 Does)	<b>13</b> (2 BB, 7 Does, 4 M)	<b>26</b> (2 BB, 21 Does, 3 M)	<b>22</b> (2 BB, 19 Does, 1 M)	<b>10</b> (2 BB, 8 Does)	<b>15</b> (1 BB, 13 Does, 1 M)	<b>2</b> (2 Does)	<b>2</b> (1 BB, 1 Doe)
<b>Winter bow</b>	<b>15</b> (2 BB, 13 Does)	<b>17</b> (16 Does, 1 M)	<b>21</b> (2 BB, 18 Does, 1 S)	<b>10</b> (1 BB, 8 Does, 1 M)	<b>15</b> (13 Does, 2 S)	<b>28</b> (4 BB, 21 Does, 3 S)	<b>7</b> (3 BB, 4 Does)	<b>10</b> (1 BB, 8 Does, 1 M)

# DEER MANAGEMENT ZONE 45

DMZ 45	2016	2017	2018	2019	2020	2021	2022	2023	Average	Percent
County	2	1	1	3	0	3	0	0	1.25	0%
Federal	0	0	1	0	0	0	0	0	0.125	0%
Municipal	1	1	2	3	1	5	1	2	2	1%
Private	99	102	159	112	115	121	31	24	95.375	35%
State	232	203	273	164	190	185	70	74	173.875	64%
Total	334	307	436	282	306	314	102	100	272.625	100%

# DEER MANAGEMENT ZONE 45

Zone 45 Permit Sales Vs. Permit Season Harvest



TotalSales	528	540	572	585	630	667	401	403	Quota
PS	69	90	96	112	114	113	52	64	170
PM	251	250	257	225	255	277	166	181	590
PB	208	200	219	248	261	277	183	158	420
Harvest	94	101	139	110	106	114	34	32	
	2016	2017	2018	2019	2020	2021	2022	2023	

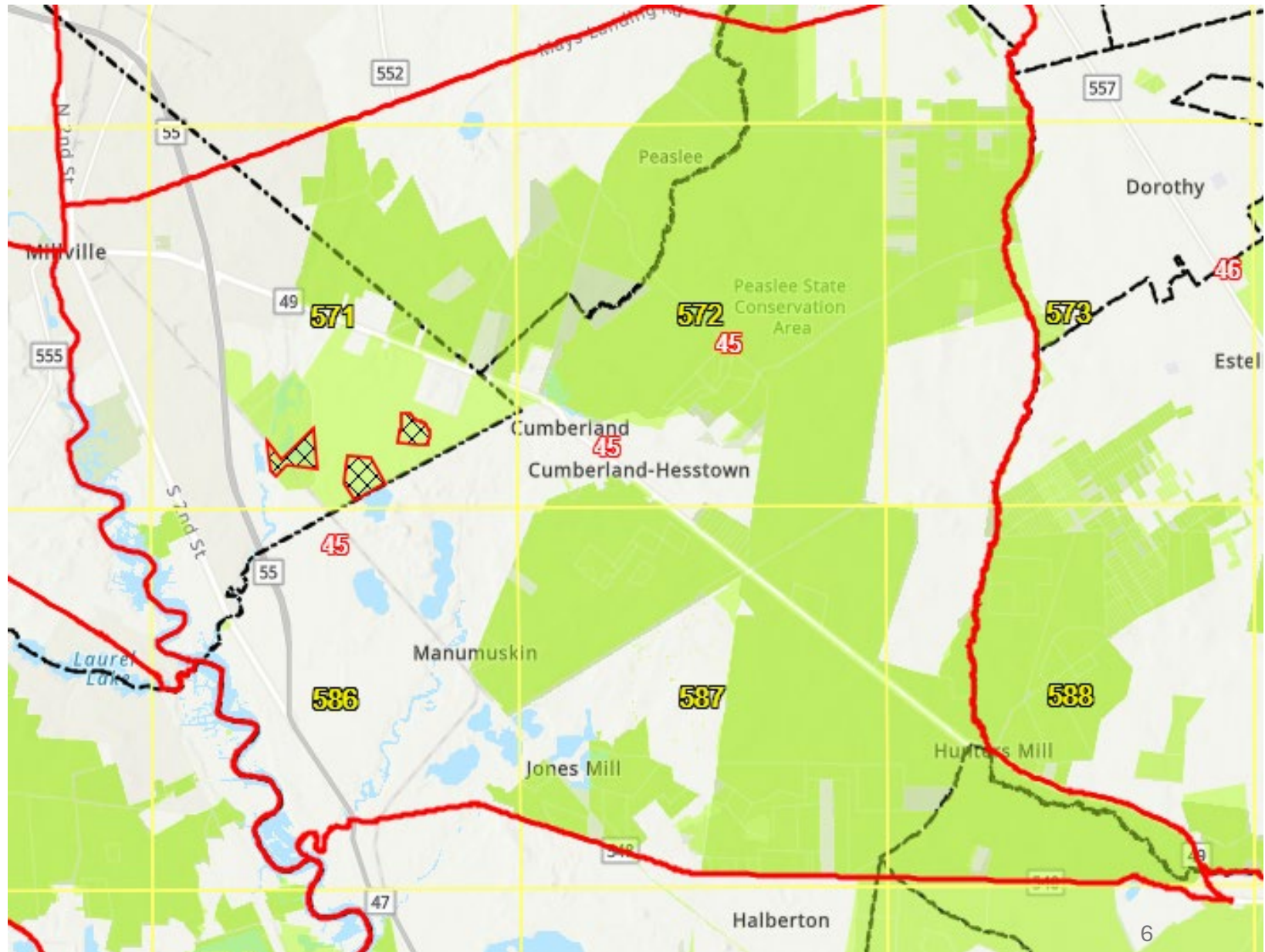
2023-24

- 403 total permits issued to 272 individual permit purchasers

# Review

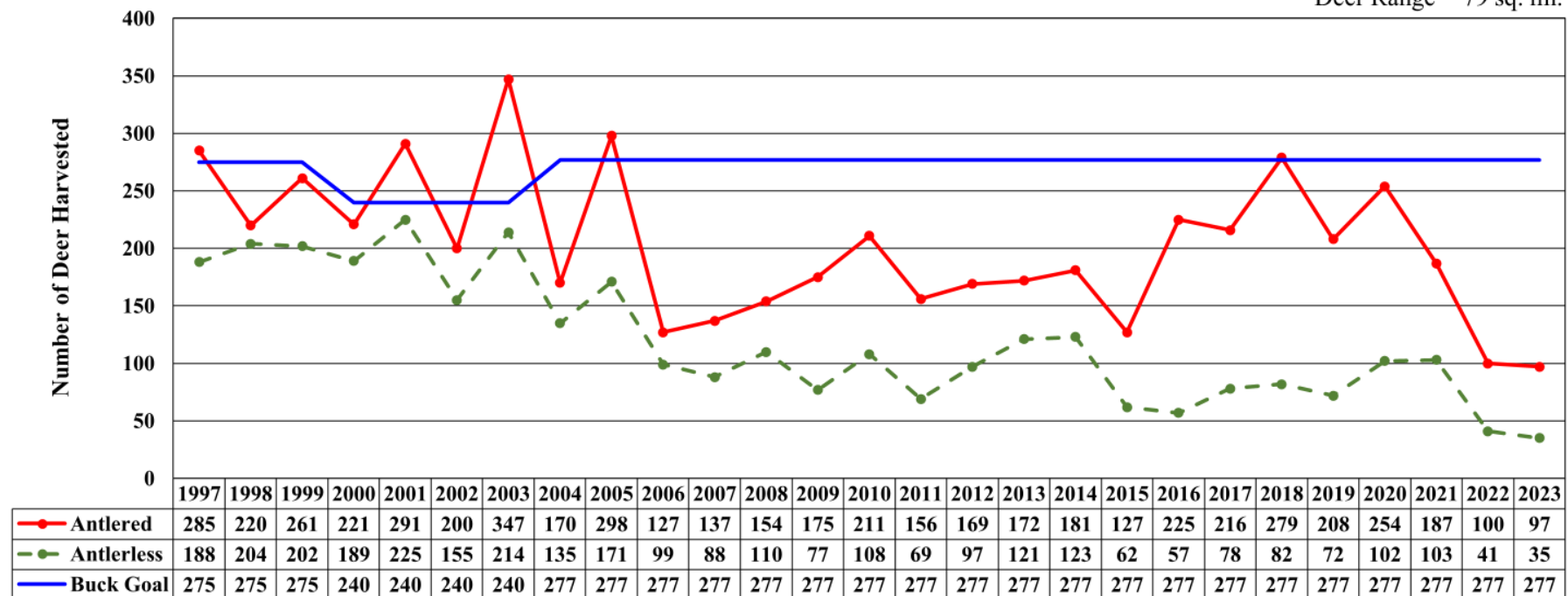
## DMZ 45

- Cumberland County
- EHD effected area
- Reg Set 0
- No depredation permits
- Most accessible public land is Peaslee WMA, taking up a large portion of the DMZ



# Deer Management Zone 46

Deer Range = 79 sq. mi.



2023-24

Reg Set 0

Buck goal = 3.5 bucks per square mile

Strategy = Increase

2016: Reg Set changed to Set 0

- 121 individual hunters harvested 132 deer
- Of the 35 Antlerless – 22 were Does
- Of the 97 Bucks - 57 taken during Six-Day

# DEER MANAGEMENT ZONE 46

<b>Antlerless</b>	<b>2016</b>	<b>2017</b>	<b>2018</b>	<b>2019</b>	<b>2020</b>	<b>2021</b>	<b>2022</b>	<b>2023</b>
<b>Fall Bow</b>	<b>14</b> (2BB, 12 Does)	<b>19</b> (3 BB, 15 Does, 1 M)	<b>16</b> (1 BB, 15 Does)	<b>15</b> (2 BB, 13 Does)	<b>27</b> (3 BB, 23 Does, 1 M)	<b>20</b> (2 BB, 16 Does, 2 M)	<b>9</b> (8 Does, 1 M)	<b>2</b> (1 Doe, 1 M)
<b>Permit Bow</b>	<b>11</b> (3 BB, 8 Does)	<b>14</b> (4 BB, 10 Does)	<b>14</b> (1 BB, 12 Does, 1 M)	<b>12</b> (1 BB, 9 Does, 2 M)	<b>17</b> (3 BB, 10 Does, 4 M)	<b>17</b> (3 BB, 11 Does, 3 M)	<b>7</b> (6 Does, 1 M)	<b>6</b> (4 BB, 2 Does)
<b>Permit Muzzleloader</b>	<b>13</b> (1 BB, 11 Does, 1 M)	<b>18</b> (1 BB, 10 Does)	<b>14</b> (2 BB, 11 Does, 1 M)	<b>15</b> (1 BB, 11 Does, 1 M, 2 S)	<b>26</b> (4 BB, 20 Does, 1M, 1 S)	<b>20</b> (2 BB, 17 Does, 1 M)	<b>11</b> (1 BB, 9 Does, 1 M)	<b>10</b> (1 BB, 9 Does)
<b>Permit Shotgun</b>	<b>2</b> (2 Does)	<b>8</b> (6 Does, 2 M)	<b>12</b> (1 BB, 8 Does, 3 M)	<b>11</b> (2 BB, 7 Does, 2 M)	<b>11</b> (1 BB, 10 Does)	<b>13</b> (2 BB, 11 Does)	<b>4</b> (4Does)	<b>5</b> (2 BB, 3 Does)
<b>Winter bow</b>	<b>13</b> (1 BB, 12 Does)	<b>17</b> (1 BB, 13 Does, 1 M, 2 S)	<b>21</b> (19 Does, 1 M, 1 S)	<b>16</b> (2 BB, 13 Does, 1 M)	<b>17</b> (2 BB, 14 Does, 1 S)	<b>30</b> (2 BB, 27 Does, 1 M)	<b>7</b> (7 Does)	<b>11</b> (3 BB, 7 Does, 1 M)

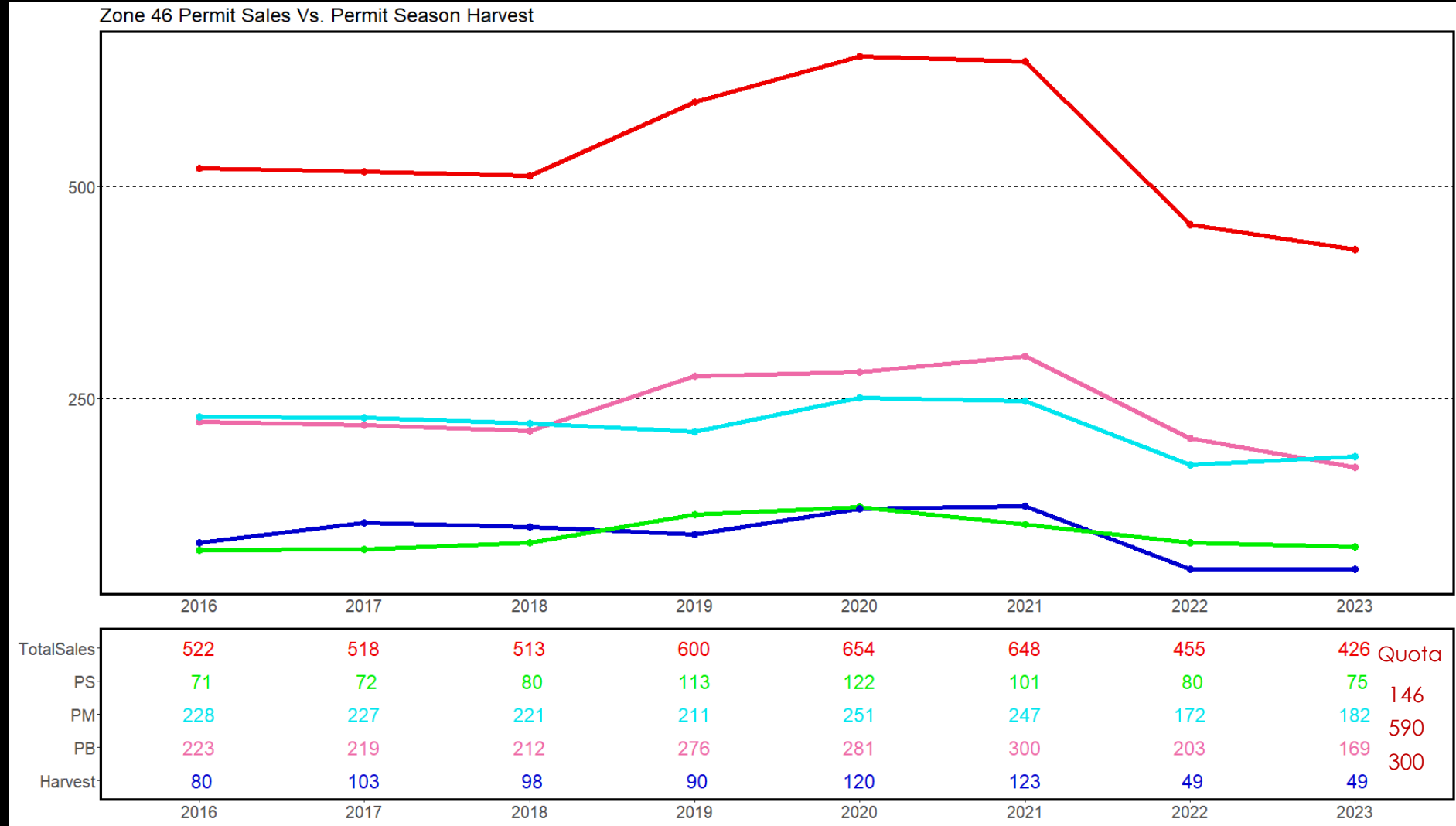
# DEER MANAGEMENT ZONE 46

DMZ 46	2016	2017	2018	2019	2020	2021	2022	2023	Average	Percent
County	2	1	2	2	1	2	0	0	1.25	0%
Federal	0	0	1	0	4	0	0	0	0.625	0%
Municipal	1	1	3	4	0	2	3	0	1.75	1%
Private	178	196	248	183	238	191	85	89	176	66%
State	101	96	107	91	113	95	53	43	87.375	33%
Total	282	294	361	280	356	290	141	132	267	100%

# DEER MANAGEMENT ZONE 46

2023-24

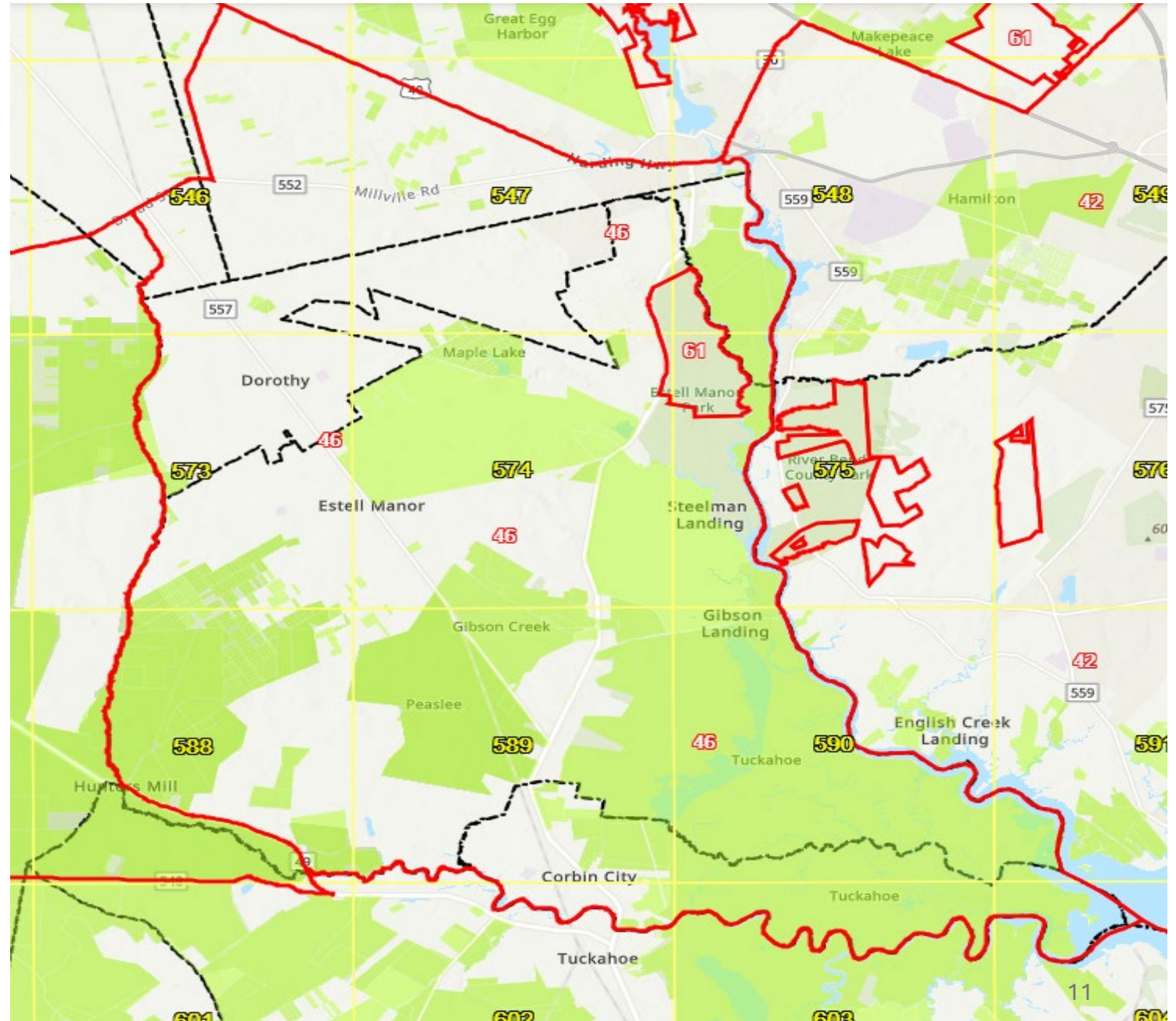
- 426 total permits issued to 297 individual permit purchasers



# Review

## DMZ 46

- Cumberland County
- EHD effected area
- Reg Set 0
- No depredation permits
- Most accessible public land is Peaslee WMA and Tuckahoe taking up a large portion of the DMZ



# SPOTLIGHT COUNT AND RESULTS

## Spotlight Count

Peaslee WMA, DMZs 45, 46

Miles Surveyed: 57.1 miles

Deer Observed: 59

Furthest Observation: 263 yards

Variable	Estimate	95% Confidence Interval
Density	6.19	1.5326 , 25.026
Group Size	2.49	1.8155 , 3.4019
Group Density	2.49	0.6180 , 10.048
Total Herd*	441	109 , 1784
*Total Herd of Zone 45 Estimated by Density * SqMi		

Number of Deer in Group

- - 1
- - 2
- - 3
- - 4
- - 5
- - 6



# DEER MANAGEMENT ZONES OF CONCERN

- 7:25-5.1 General provisions
  - (g) The Director, with the approval of the Fish and Game Council, may close any hunting or trapping season state-wide or in a designated area, when necessary to respond to emergencies or special circumstances when it is deemed necessary to protect wildlife or human health or safety. Such closure shall be announced by press, radio, Division website ([www.njfishandwildlife.com](http://www.njfishandwildlife.com)) and listserv, found at <http://www.state.nj.us/dep/fgw/lstsub.htm>.

# GAME COMMITTEE RECOMMENDATIONS FOR COUNCIL

## DMZ 45

- 2024/2025
- Deer Season will be open for Fall Bow and Six-Day Firearm only
- Closed for all other deer seasons

## DMZ 46

- 2024/2025
- Deer Season will be open for Fall Bow and Six-Day Firearm only
- Closed for all other deer seasons

# GAME COMMITTEE RECOMMENDATIONS

## DMZs 45 and 46

- Open only for Fall Bow and Six-Day Firearm
- Digest – call out box
- Email current holders of DMZs 45 and 46 permits
- Notification on website and social media
- Education - encourage hunting of coyotes
- Repeat Spotlight Counts
- Will monitor and may extend through the 2025/2026 season

## Other DMZs of concern

- Will continue to monitor harvest and permit issuance over next few years

# DEER MANAGEMENT ZONES OF CONCERN

- Council Discussion
- Vote